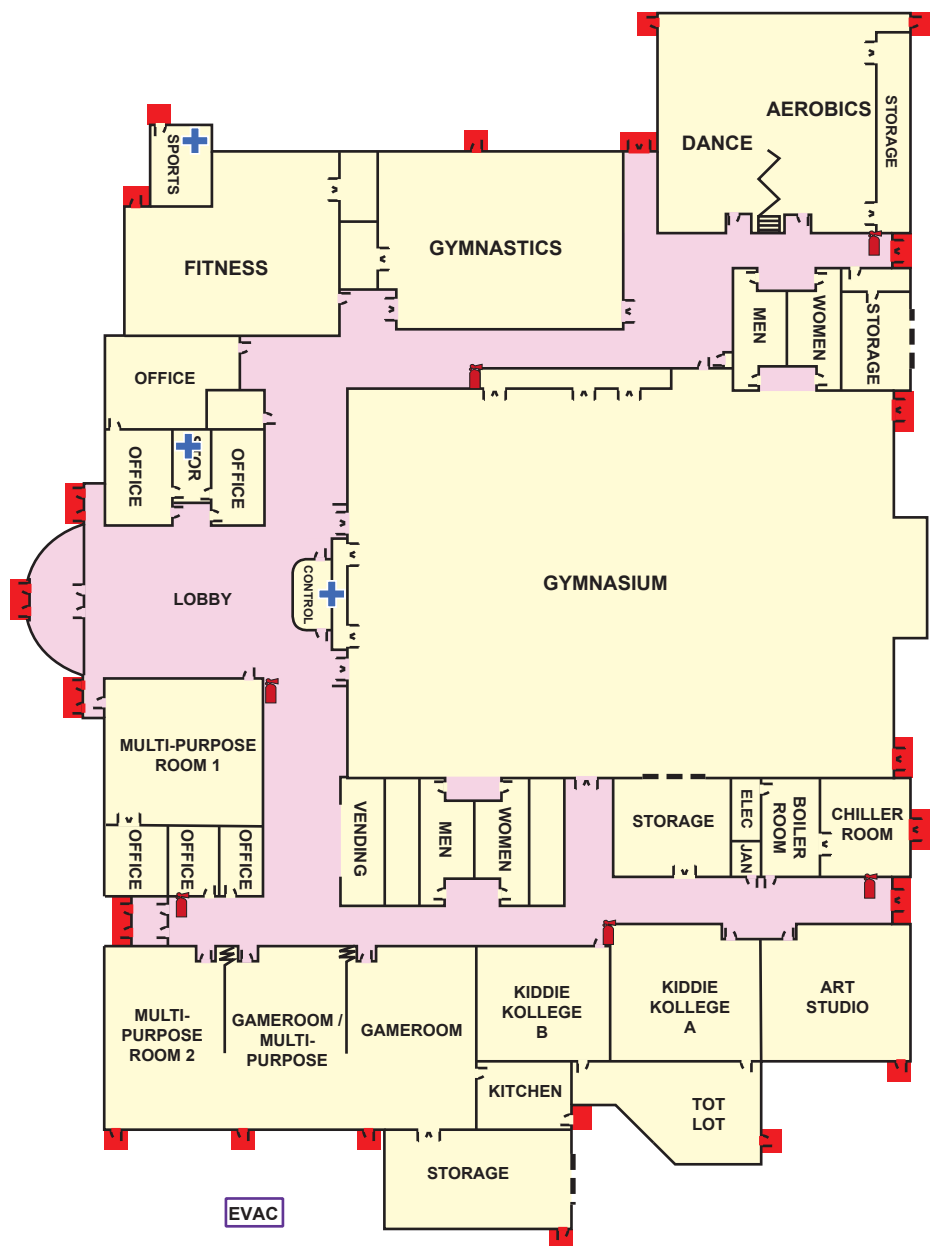


EVACUATION INSTRUCTIONS



WARNING SYSTEM EMERGENCY SIGNALS

- FIRE/EVACUATION:** FOUR NOTIFICATION ALARMS
- TAKE COVER:** SIREN FOLLOWED BY A MESSAGE
- ALL CLEAR:** YOU WILL RECEIVE NOTIFICATION FROM THE PROPER AUTHORITY

INSTRUCTIONS TO ALL EMPLOYEES

FIRE / EVACUATION: FOLLOW THE PROCEDURES BELOW.

1. DO NOT USE FIRE EXTINGUISHER EQUIPMENT UNLESS TRAINED ANNUALLY.
2. GO TO NEAREST DESIGNATED EXIT AND PROCEED TO DESIGNATED EVACUATION AREA. SEE MAP AT LEFT FOR NEAREST LOCATION.
3. STAY IN EVACUATION AREA UNTIL THE ALL CLEAR IS SOUNDED.

NATURAL DISASTERS:

EARTHQUAKES, FLOODS, OR OTHER NATURAL HAZARDS WHICH MAY THREATEN THE FACILITY AND/OR ITS POPULATION.

1. SHUT OFF ALL POWER TO MACHINES AND EQUIPMENT.
2. DO NOT USE TELEPHONES.
3. OBEY YOUR SUPERVISORS INSTRUCTIONS.
4. WALK, REMAIN CALM, DO NOT PUSH OR CAUSE CONFUSION.
5. DO NOT SMOKE DURING DISASTER ALERT.
6. AVOID DANGER ZONES, GLASS, WINDOWS, HEAVY THINGS THAT CAN FALL OVER OR DOWN ON YOU. IF OUTDOORS, STAY OUTSIDE. TRY TO MOVE AWAY FROM BUILDINGS, POWER LINES AND STREET LIGHTS.
7. CHECK TO MAKE SURE NO ONE HAS BEEN INJURED.
8. GO TO NEAREST DESIGNATED SHELTER OR EVACUATION/STAGING AREA.
9. REMAIN IN THE DESIGNATED EVACUATION AREA UNTIL YOU HAVE BEEN GIVEN FURTHER INSTRUCTIONS.

LEGEND

- EXIT
- OFFICE
- EXIT ROUTE
- HALL
- ROLL-UP DOORS
- EVAC EVACUATION ASSEMBLY AREA
- + FIRST AID
- FIRE EXTINGUISHER

